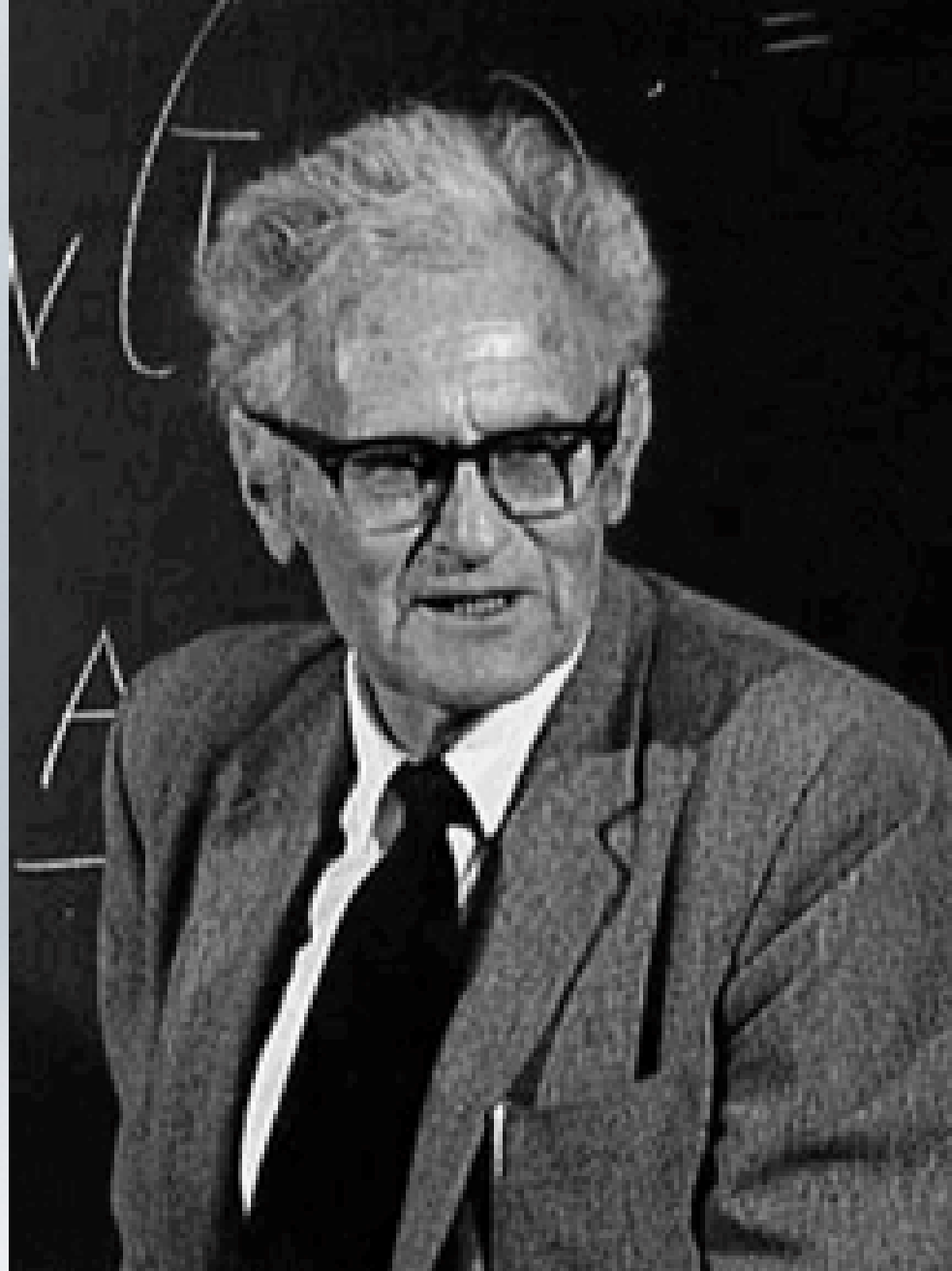




The City As Biological Organism



Max Kleiber

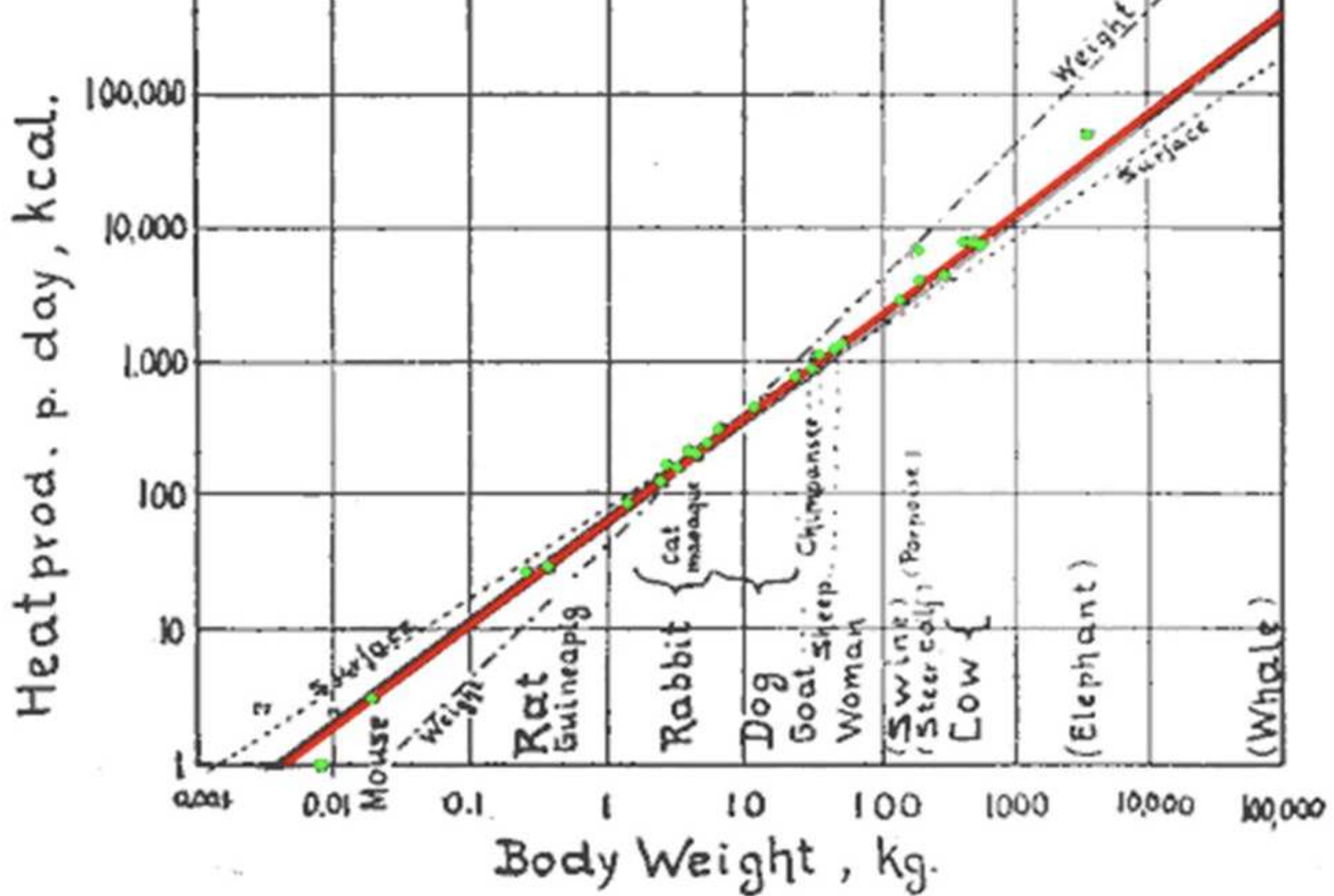
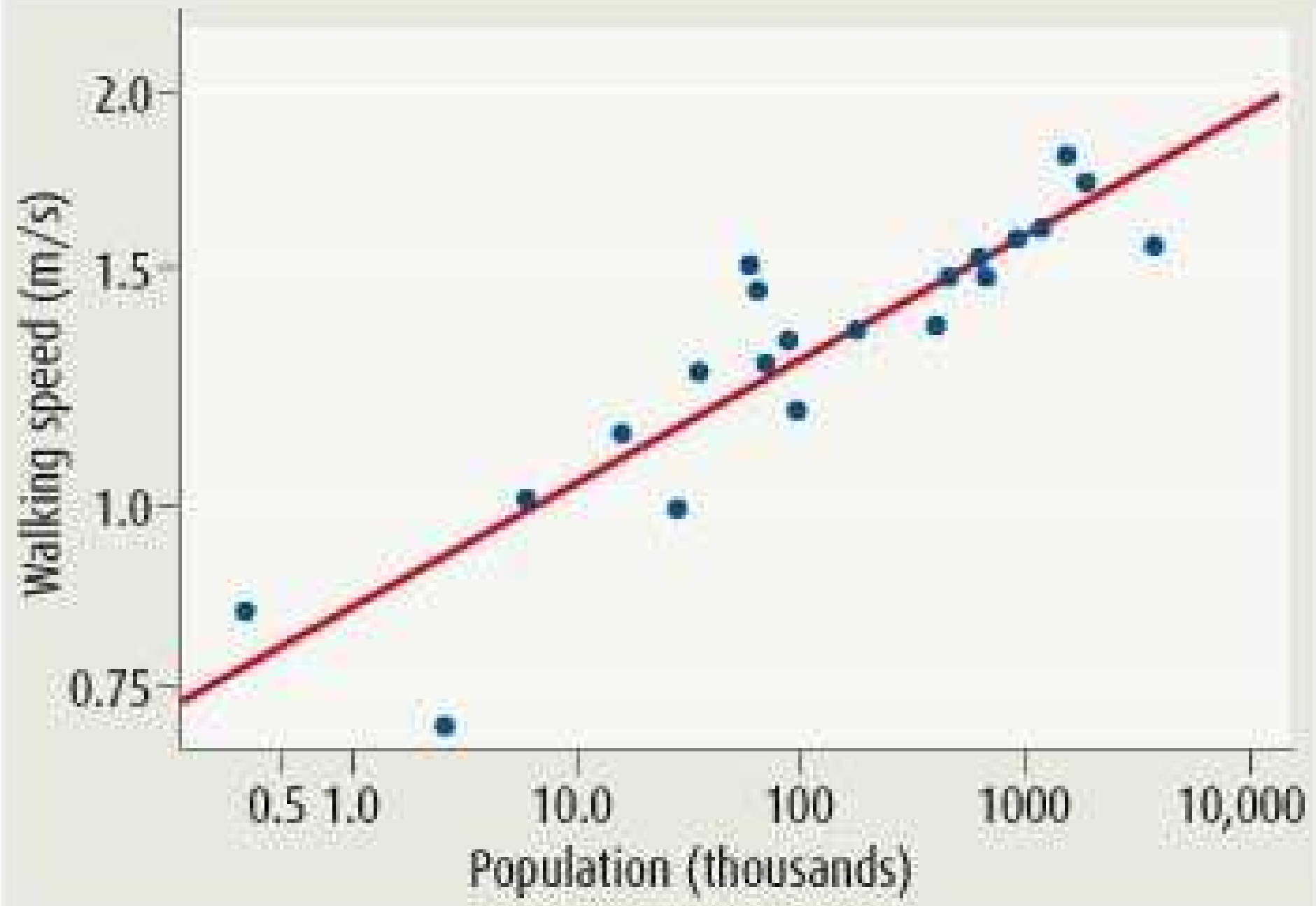
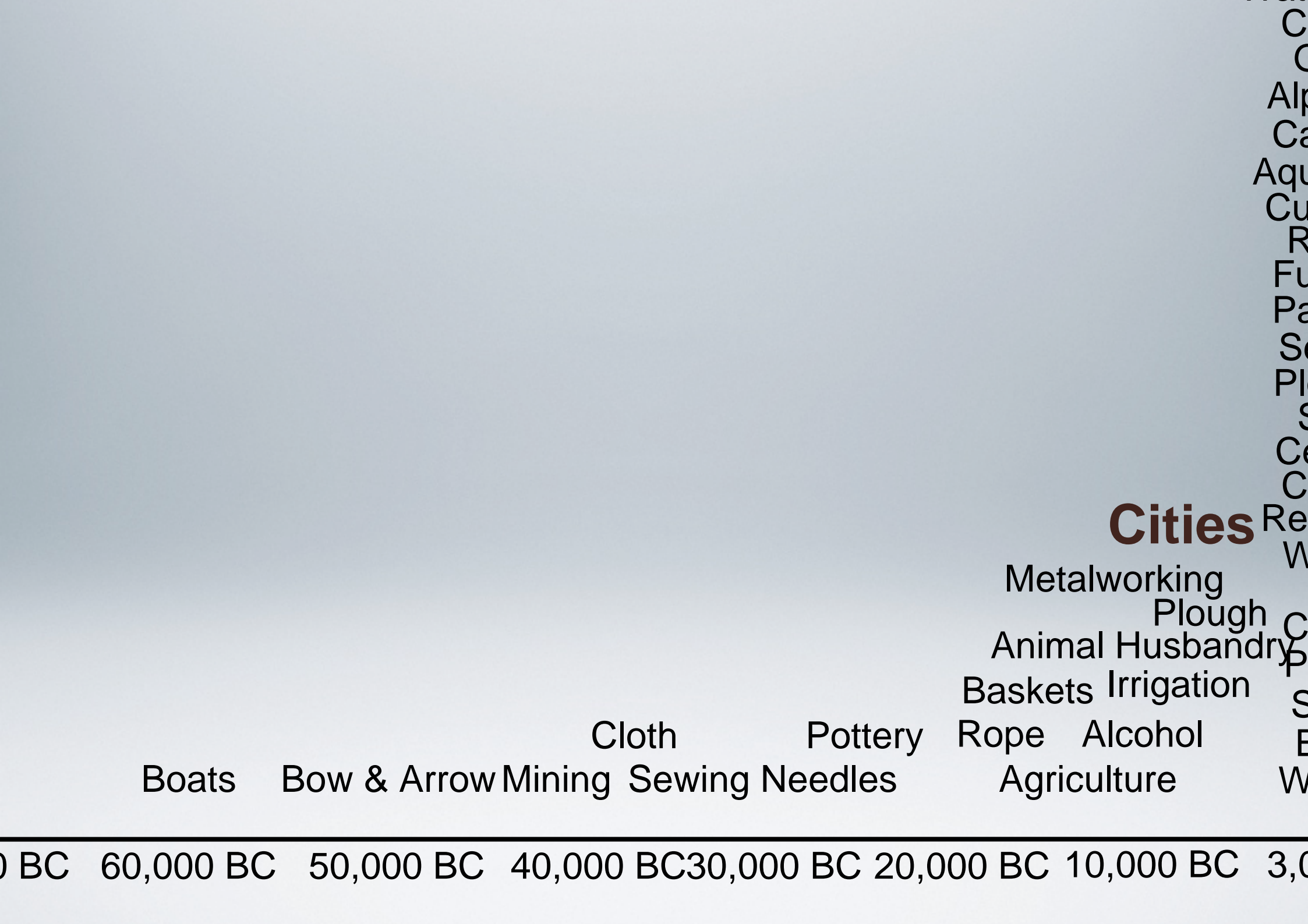


Fig. 1. Log. metabol. rate/log body weight

Kleiber's Law



0 0 0 0





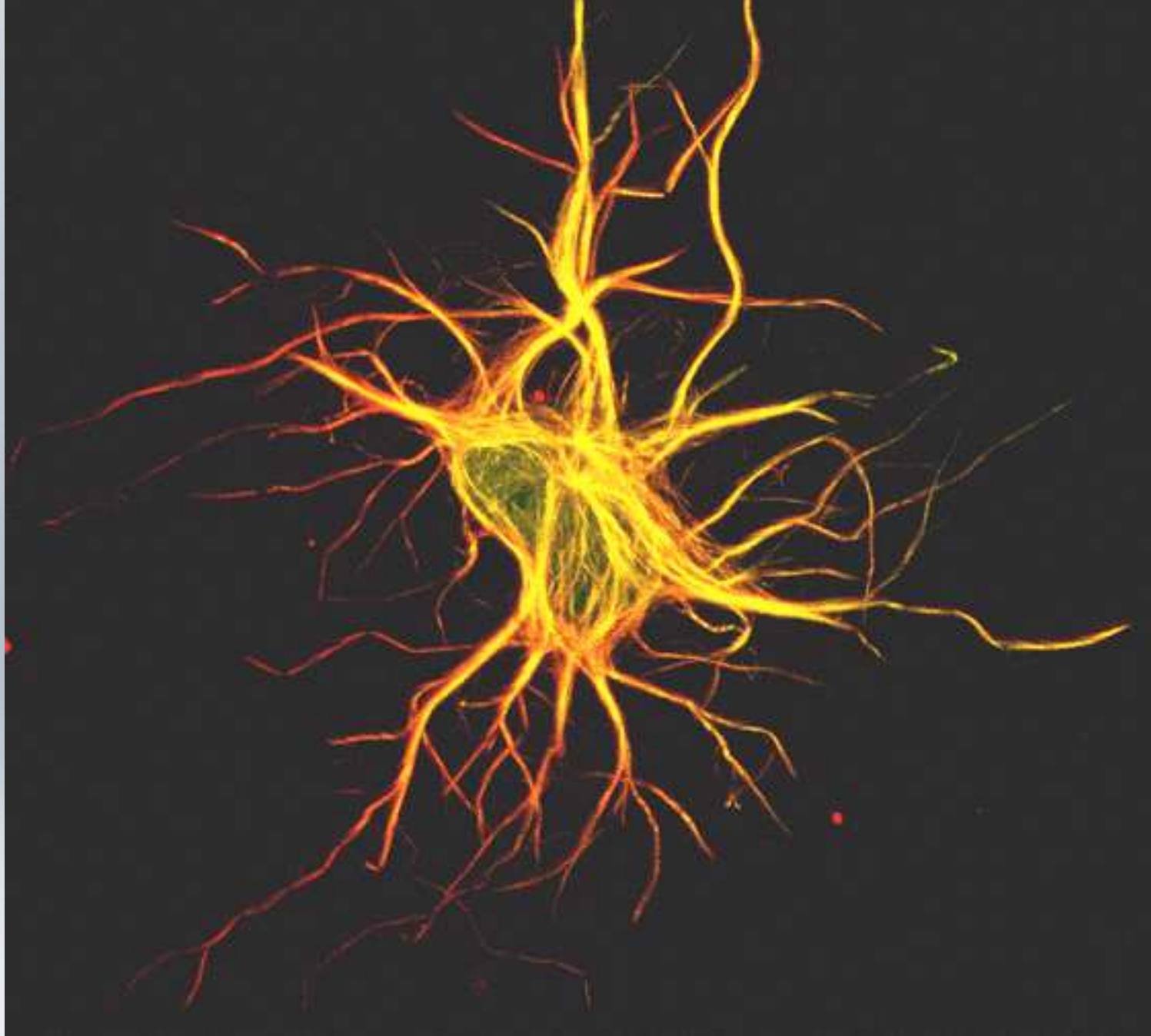
The Adjacent Possible



It's Not Just The Market



D i D



Ideas Are Networks



The Slow Hunch



Serendipity



Exaptation



Recycling



New Ideas Need Old Buildings



Platforms For Innovation



The City As Platform